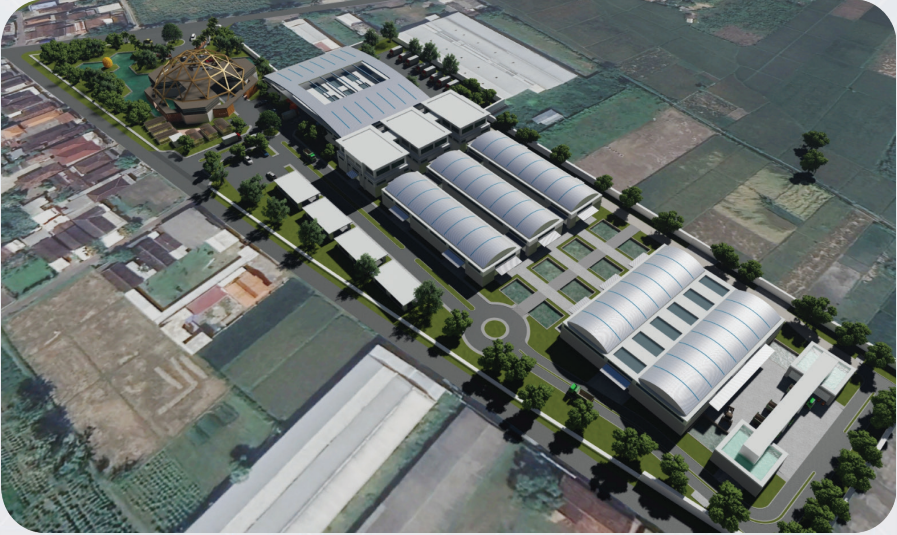


Manufacture

Fruit Based Processing Industry



› Scope of Project Investment

Investment project for fruit-based processing in Kediri Regency, the top producer of pineapple and mango in East Java, with strong potential for industrial downstreaming. High domestic and export demand supports growth. The project also produces concentrate feed independently and offers quality products at competitive prices.

› Project Description

The fruit-based processing industry in Kediri Regency has an investment value of IDR 294.77 billion and is located in Kedungsari Village, Tarokan Sub-district. The products produced include canned pineapple, syrup (pineapple and mango), juice (pineapple and mango), pineapple jam, and dried fruit (pineapple and mango). This industry employs 306 workers, with full financing provided by investors. The proposed cooperation scheme is Business-to-Business (B2B), targeting marketing channels such as retail, wholesalers, hotel corporations, exports, and others.

Key Investment Highlight

Location	Kedungsari Village, Tarokan Sub-district, Kediri Regency, located at coordinates 7° 42' 33.7" South Latitude and 111° 56' 02.5" East Longitude.
Total Area/ Land Status	46,588 m2 or 4.7 Ha
Business Scheme	Business-to-Business (B2B) scheme involving retail, wholesale traders, hotel corporations, export activities, and others.
Est. Investment Value	USD 18,42 million IDR 294.767.882.231,00
Project Owner	Investment and Integrated License Services of Kediri Regency
Financial Feasibility	<ul style="list-style-type: none"> • Concession Period: • IRR : 30,74 % • PP : 5 years 4 month • NPV : IDR 303.412.342.791 • PI : 7.61 • BEP : 4 years 7 month • BCR : 1, 23

This investment project has been profiled by banking institutions i.a.



Contact Person

Investment and Integrated License Services of Kediri Regency

Address : Jl. Sukarno Hatta, No 14, Katang, Sukorejo, Kabupaten Kediri

Name : Devin Marsfian Subiyanto, Agustawan

Phone : 081359624666, 085235977628